

BeutiBond Xtreme

Single-Component, Total Universal Bond with Quad-Adhesive Technology



BeutiBond Xtreme
Single-Component,
Total Universal Bond with
Quad-Adhesive Technology

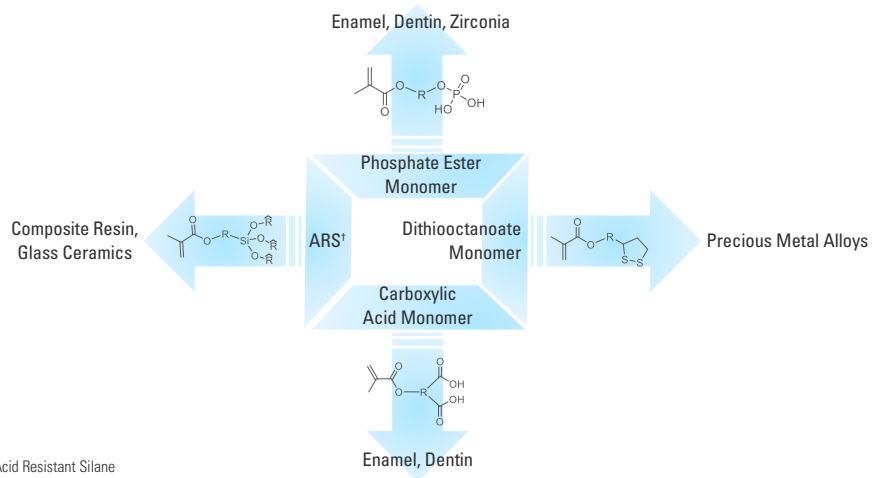
SERVE
PATIENTS
INCREASE
PRODUCTION
GO HOME
ON TIME!

Shofu is dedicated to manufacturing the highest quality products utilizing our innovative technologies to enhance minimally invasive cosmetic dentistry.

shofu.com
800.827.4638
customer-service@shofu.com

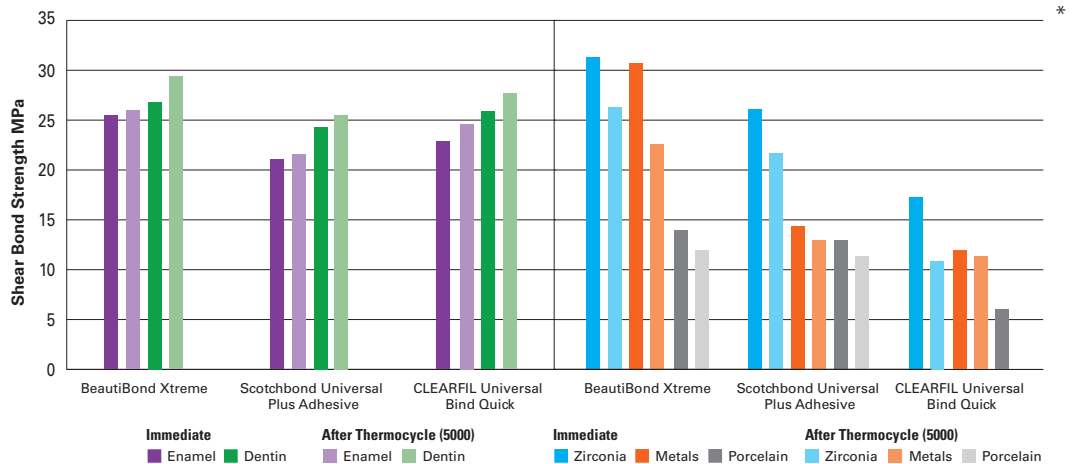
STRONG DURABLE BOND

Due to **BeutiBond Xtreme's** unique Quad-Adhesive Technology, a single layer gives a strong, fast, and reliable bond. Ideal for direct and indirect restorations using any light-cure, dual-cure or self-cure material without the need for additional primers. **BeutiBond Xtreme** is the truly universal adhesive that offers flexibility with self-etch, selective-etch, or total-etch—the choice is yours!

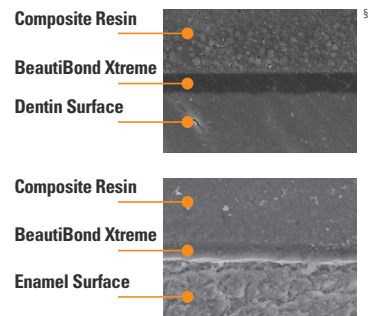


¹ARS, Acid Resistant Silane

Self-Etch Mode



BeutiBond Xtreme is HEMA-free, eliminating the risk of sensitivity and bond hydrolysis. This also improves the stability of the adhesive layer, resulting in a uniform layer that is only 5µm thick and with minimized technique sensitivity. Even after the thermocycling process, no gaps were found between the enamel and dentin adhesive interfaces, allowing for a strong bond and excellent marginal aesthetics.

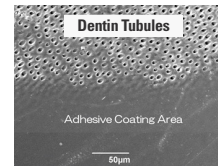


⁵University of Paris, France

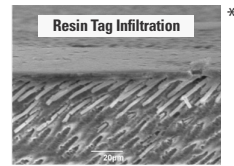


PREVENTS SENSITIVITY

BeutiBond Xtreme provides an optimal seal to wet or dry dentin, penetrating deep into the dentinal tubules to create resin tags for secure adhesion, eliminating the risk of postoperative sensitivity and microleakage.



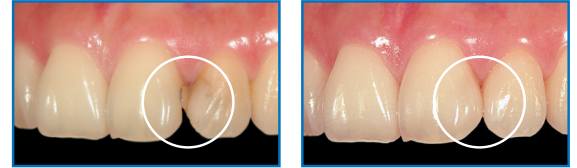
BeutiBond Xtreme coated dentin surface with a single layer application.



Cross sectional SEM image of sealed layer.

AESTHETIC

With extremely low film thickness (5µm), **BeutiBond Xtreme** eliminates marginal stain lines caused by brands with thicker bonding layers. **BeutiBond Xtreme** is the best choice when restorations must be picture-perfect.

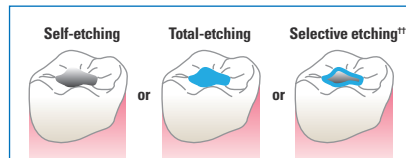


Dr. Kanamura

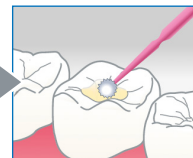
FAST AND EASY TO USE

BeutiBond Xtreme's ease of use and simplified one-step application makes the bonding process consistently reliable and clinically efficient.

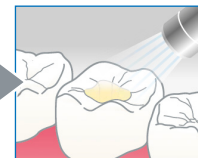
DIRECT RESTORATIONS



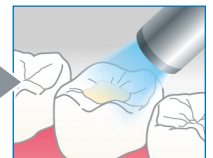
Preparation of the tooth surface
**Follow the standard method for acid etch. Then rinse and dry.



Apply a single layer—
No waiting time.
When etching with phosphoric acid, rub for 20 seconds.

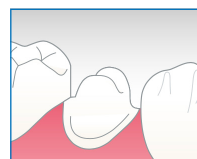


Gently air dry for 3 seconds then blow with greater force until evaporated.

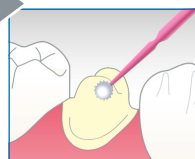
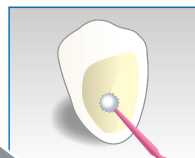


LED Light: 5 seconds
Halogen Light: 10 seconds

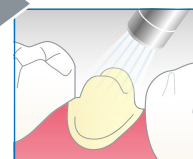
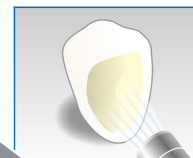
INDIRECT RESTORATIONS



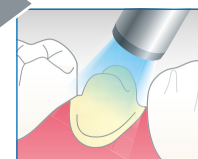
● Roughen the intaglio restoration surface. Rinse and dry.



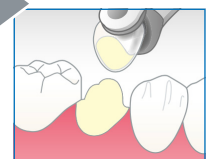
Apply a single layer—
No waiting time.



Gently air dry for 3 seconds then blow with greater force until evaporated.



Light-cure.
LED Light: 5 seconds
Halogen Light: 10 seconds



Apply resin cement, seat and cure as per manufacturer's instruction.

shofu.com
800.827.4638
customer-service@shofu.com

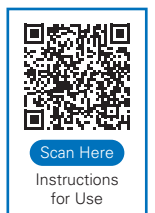


BeutiBond[®] Xtreme



- BeutiBond Xtreme Unit Dose Set**
(Item No. Y2702)
 - (50) 0.1mL unit doses
 - 50 microbrushes

- BeutiBond Xtreme Bottle**
(Item No. Y2449)
 - 5mL



*Shofu internal testing